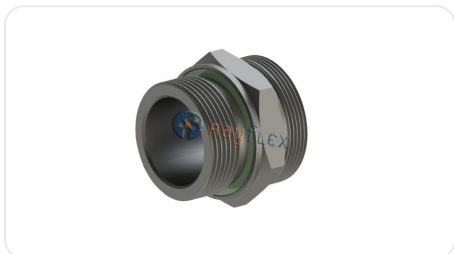


RACOR RECTO TUBO - MACHO BSPP C/JUNTA CUERPO INOX



| Código | Referencia | Rosca | Ø tubo mm |
|-------------|-----------------|------------|-----------|
| XRD61160602 | IXGE-06LR1/8-ED | M-1/8 BSPP | 6 L |
| XRD61160604 | IXGE-06LR1/4-ED | M-1/4 BSPP | 6 L |
| XRD61160606 | IXGE-06LR3/8-ED | M-3/8 BSPP | 6 L |
| XRD61160608 | IXGE-06LR1/2-ED | M-1/2 BSPP | 6 L |
| XRD61160802 | IXGE-08LR1/8-ED | M-1/8 BSP | 8 L |
| XRD61160804 | IXGE-08LR1/4-ED | M-1/4 BSPP | 8 L |
| XRD61160806 | IXGE-08LR3/8-ED | M-3/8 BSPP | 8 L |
| XRD61160808 | IXGE-08LR1/2-ED | M-1/2 BSPP | 8 L |
| XRD61161002 | IXGE-10LR1/8-ED | M-1/8 BSPP | 10 L |
| XRD61161004 | IXGE-10LR1/4-ED | M-1/4 BSPP | 10 L |
| XRD61161006 | IXGE-10LR3/8-ED | M-3/8 BSPP | 10 L |
| XRD61161008 | IXGE-10LR1/2-ED | M-1/2 BSPP | 10 L |
| XRD61161204 | IXGE-12LR1/4-ED | M-1/4 BSPP | 12 L |
| XRD61161206 | IXGE-12LR3/8-ED | M-3/8 BSPP | 12 L |
| XRD61161208 | IXGE-12LR1/2-ED | M-1/2 BSPP | 12 L |
| XRD61161212 | IXGE-12LR3/4-ED | M-3/4 BSPP | 12 L |
| XRD61161504 | IXGE-15LR1/4-ED | M-1/4 BSPP | 15 L |
| XRD61161506 | IXGE-15LR3/8-ED | M-3/8 BSPP | 15 L |

| Código | Referencia | Rosca | Ø tubo mm |
|-------------|-------------------|--------------|-----------|
| XRD61161508 | IXGE-15LR1/2-ED | M-1/2 BSPP | 15 L |
| XRD61161512 | IXGE-15LR3/4-ED | M-3/4 BSPP | 15 L |
| XRD61161806 | IXGE-18LR3/8-ED | M-3/8 BSPP | 18 L |
| XRD61161808 | IXGE-18LR1/2-ED | M-1/2 BSPP | 18 L |
| XRD61161812 | IXGE-18LR3/4-ED | M-3/4 BSPP | 18 L |
| XRD61161816 | IXGE-18LR1"-ED | M-1" BSPP | 18 L |
| XRD61162208 | IXGE-22LR1/2-ED | M-1/2 BSPP | 22 L |
| XRD61162212 | IXGE-22LR3/4-ED | M-3/4 BSPP | 22 L |
| XRD61162216 | IXGE-22LR1"-ED | M-1" BSPP | 22 L |
| XRD61162812 | IXGE-28LR3/4-ED | M-3/4 BSPP | 28 L |
| XRD61162816 | IXGE-28LR1"-ED | M-1" BSPP | 28 L |
| XRD61163516 | IXGE-35LR1"-ED | M-1" BSPP | 35 L |
| XRD61163520 | IXGE-35LR1"1/4-ED | M-1"1/4 BSPP | 35 L |
| XRD61164220 | IXGE-42LR1"1/4-ED | M-1"1/4 BSPP | 42 L |
| XRD61164224 | IXGE-42LR1"1/2-ED | M-1"1/2 BSPP | 42 L |
| XRD61170604 | IXGE-06SR1/4-ED | M-1/4 BSPP | 6 S |
| XRD61170606 | IXGE-06SR3/8-ED | M-3/8 BSPP | 6 S |
| XRD61170608 | IXGE-06SR1/2-ED | M-1/2 BSPP | 6 S |
| XRD61170804 | IXGE-08SR1/4-ED | M-1/4 BSPP | 8 S |
| XRD61170806 | IXGE-08SR3/8-ED | M-3/8 BSPP | 8 S |
| XRD61171004 | IXGE-10SR1/4-ED | M-1/4 BSPP | 10 S |
| XRD61171006 | IXGE-10SR3/8-ED | M-3/8 BSPP | 10 S |
| XRD61171008 | IXGE-10SR1/2-ED | M-1/2 BSPP | 10 S |
| XRD61171204 | IXGE-12SR1/4-ED | M-1/4 BSPP | 12 S |
| XRD61171206 | IXGE-12SR3/8-ED | M-3/8 BSPP | 12 S |
| XRD61171208 | IXGE-12SR1/2-ED | M-1/2 BSPP | 12 S |
| XRD61171212 | IXGE-12SR3/4 | M-3/4 BSPP | 12 S |
| XRD61171406 | IXGE-14SR3/8-ED | M-3/8 BSPP | 14 S |
| XRD61171408 | IXGE-14SR1/2-ED | M-1/2 BSPP | 14 S |
| XRD61171606 | IXGE-16SR3/8-ED | M-3/8 BSPP | 16 S |
| XRD61171608 | IXGE-16SR1/2-ED | M-1/2 BSPP | 16 S |

| Código | Referencia | Rosca | Ø tubo mm |
|-------------|-------------------|--------------|--------------|
| XRD61171612 | IXGE-16SR3/4-ED | M-3/4 BSPP | 16 S |
| XRD61172008 | IXGE-20SR1/2-ED | M-1/2 BSPP | 20 S |
| XRD61172012 | IXGE-20SR3/4-ED | M-3/4 BSPP | 20 S |
| XRD61172016 | IXGE-20SR1"-ED | M-1" BSPP | 20 S |
| XRD61172508 | IXGE-25SR1/2-ED | M-1/2 BSPP | 25 S |
| XRD61172512 | IXGE-25SR3/4-ED | M-3/4 BSPP | 25 S |
| XRD61172516 | IXGE-25SR1"-ED | M-1" BSPP | 25 S |
| XRD61172520 | IXGE-25SR1"1/4-ED | M-1"1/4 BSPP | 25 S |
| XRD61173016 | IXGE-30SR1"-ED | M-1" BSPP | 30 S |
| XRD61173020 | IXGE-30SR1"1/4-ED | M-1"1/4 BSPP | 30 S |
| XRD61173820 | IXGE-38SR1"1/4-ED | M-1"1/4 BSPP | 38 S |
| XRD61173824 | IXGE-38SR1"1/2-ED | M-1"1/2 BSPP | 38 S |

Los datos facilitados son orientativos y se encuentran sujetos a variaciones o correcciones sin previo aviso. Rogamos se pongan en contacto con nosotros si detectan algún error o requieren más información técnica. (Ficha generada el 01/07/2026 a las 20:06:36)

Rayflex Sistemas y Fluidos S.A.
 Pol. Ind. El Pla, C/Miquel Torelló i Pagès, 37-39, 08750 Molins de Rei, Barcelona
 T. + 34 93 680 43 20 - info@rayflex.net

© Rayflex Todos los derechos reservados