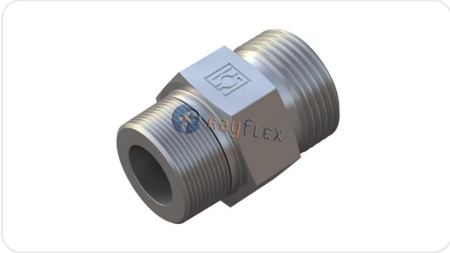


STRAIGHT FITTING TUBE TO NPT MALE BODY



Code	Rosca	Ø tubo mm
RD61350402	M-1/8 NPT	4 LL
RD61350602	M-1/8 NPT	6 LL
RD61350802	M-1/8 NPT	8 LL
RD61360602	M-1/8 NPT	6 L
RD61360604	M-1/4 NPT	6 L
RD61360804	M-1/4 NPT	8 L
RD61361004	M-1/4 NPT	10 L
RD61361006	M-3/8 NPT	10 L
RD61361204	M-1/4 NPT	12 L
RD61361206	M-3/8 NPT	12 L
RD61361208	M-1/2 NPT	12 L
RD61361508	M-1/2 NPT	15 L
RD61361808	M-1/2 NPT	18 L
RD61362212	M-3/4 NPT	22 L
RD61362816	M-1" NPT	28 L
RD61363520	M-1"1/4 NPT	35 L
RD61364224	M-1"1/2 NPT	42 L
RD61370604	M-1/4 NPT	6 S
RD61370804	M-1/4 NPT	8 S

Code	Rosca	Ø tubo mm
RD61371004	M-1/4 NPT	10 S
RD61371006	M-3/8 NPT	10 S
RD61371204	M-1/4 NPT	12 S
RD61371206	M-3/8 NPT	12 S
RD61371208	M-1/2 NPT	12 S
RD61371408	M-1/2 NPT	14 S
RD61371608	M-1/2 NPT	16 S
RD61372012	M-3/4 NPT	20 S
RD61372516	M-1" NPT	25 S
RD61373020	M-1"1/4 NPT	30 S
RD61373824	M-1"1/2 NPT	38 S

The data provided is for guidance only and may be subject to changes or corrections without prior notice. Please contact us if you detect any errors or require further technical information. (Ficha generada el 02/04/2026 a las 17:27:10)

Rayflex Sistemas y Fluidos S.A.
 Pol. Ind. El Pla, C/Miquel Torelló i Pagès, 37-39, 08750 Molins de Rei, Barcelona
 T. + 34 93 680 43 20 - info@rayflex.net

© Rayflex Todos los derechos reservados