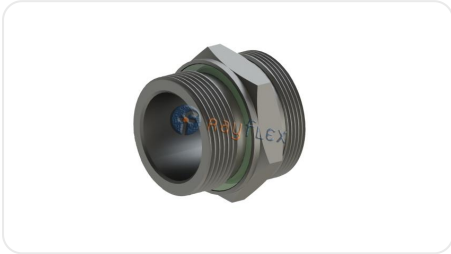


# STRAIGHT TUBE TO BSPP MALE WITH SEAL BODY STAINLESS STEEL



Code	Rosca	Ø tubo mm
XRD61160602	M-1/8 BSPP	6 L
XRD61160604	M-1/4 BSPP	6 L
XRD61160606	M-3/8 BSPP	6 L
XRD61160608	M-1/2 BSPP	6 L
XRD61160802	M-1/8 BSP	8 L
XRD61160804	M-1/4 BSPP	8 L
XRD61160806	M-3/8 BSPP	8 L
XRD61160808	M-1/2 BSPP	8 L
XRD61161002	M-1/8 BSPP	10 L
XRD61161004	M-1/4 BSPP	10 L
XRD61161006	M-3/8 BSPP	10 L
XRD61161008	M-1/2 BSPP	10 L
XRD61161204	M-1/4 BSPP	12 L
XRD61161206	M-3/8 BSPP	12 L
XRD61161208	M-1/2 BSPP	12 L
XRD61161212	M-3/4 BSPP	12 L
XRD61161504	M-1/4 BSPP	15 L
XRD61161506	M-3/8 BSPP	15 L

Code	Rosca	Ø tubo mm
XRD61161508	M-1/2 BSPP	15 L
XRD61161512	M-3/4 BSPP	15 L
XRD61161806	M-3/8 BSPP	18 L
XRD61161808	M-1/2 BSPP	18 L
XRD61161812	M-3/4 BSPP	18 L
XRD61161816	M-1" BSPP	18 L
XRD61162208	M-1/2 BSPP	22 L
XRD61162212	M-3/4 BSPP	22 L
XRD61162216	M-1" BSPP	22 L
XRD61162812	M-3/4 BSPP	28 L
XRD61162816	M-1" BSPP	28 L
XRD61163516	M-1" BSPP	35 L
XRD61163520	M-1"1/4 BSPP	35 L
XRD61164220	M-1"1/4 BSPP	42 L
XRD61164224	M-1"1/2 BSPP	42 L
XRD61170604	M-1/4 BSPP	6 S
XRD61170606	M-3/8 BSPP	6 S
XRD61170608	M-1/2 BSPP	6 S
XRD61170804	M-1/4 BSPP	8 S
XRD61170806	M-3/8 BSPP	8 S
XRD61171004	M-1/4 BSPP	10 S
XRD61171006	M-3/8 BSPP	10 S
XRD61171008	M-1/2 BSPP	10 S
XRD61171204	M-1/4 BSPP	12 S
XRD61171206	M-3/8 BSPP	12 S
XRD61171208	M-1/2 BSPP	12 S
XRD61171212	M-3/4 BSPP	12 S
XRD61171406	M-3/8 BSPP	14 S
XRD61171408	M-1/2 BSPP	14 S
XRD61171606	M-3/8 BSPP	16 S
XRD61171608	M-1/2 BSPP	16 S

Code	Rosca	Ø tubo mm
XRD61171612	M-3/4 BSPP	16 S
XRD61172008	M-1/2 BSPP	20 S
XRD61172012	M-3/4 BSPP	20 S
XRD61172016	M-1" BSPP	20 S
XRD61172508	M-1/2 BSPP	25 S
XRD61172512	M-3/4 BSPP	25 S
XRD61172516	M-1" BSPP	25 S
XRD61172520	M-1"1/4 BSPP	25 S
XRD61173016	M-1" BSPP	30 S
XRD61173020	M-1"1/4 BSPP	30 S
XRD61173820	M-1"1/4 BSPP	38 S
XRD61173824	M-1"1/2 BSPP	38 S

The data provided is for guidance only and may be subject to changes or corrections without prior notice. Please contact us if you detect any errors or require further technical information. (Ficha generada el 02/04/2026 a las 08:24:27)

Rayflex Sistemas y Fluidos S.A.  
 Pol. Ind. El Pla, C/Miquel Torelló i Pagès, 37-39, 08750 Molins de Rei, Barcelona  
 T. + 34 93 680 43 20 - info@rayflex.net

© Rayflex Todos los derechos reservados