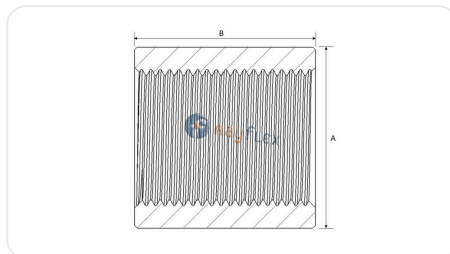
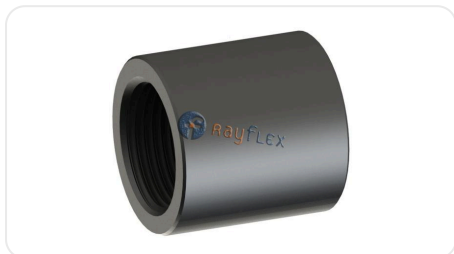


# BSPF FEMALE WELDABLE COUPLING STAINLESS STEEL



## MATERIAL

AISI 316-L

Code	Rosca	A mm	B mm	P.trab.máx bar
XRB60020004	1/4	20	23	830
XRB60020006	3/8	24	31	700
XRB60020008	1/2	30	35	700
XRB60020012	3/4	34	45	600
XRB60020016	1"	42	50	420
XRB60020020	1"1/4	50	55	420
XRB60020024	1"1/2	56	55	420

The data provided is for guidance only and may be subject to changes or corrections without prior notice. Please contact us if you detect any errors or require further technical information. (Ficha generada el 02/04/2026 a las 12:01:26)