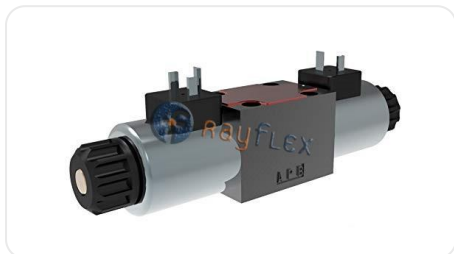


PROPORTIONAL VALVE WITHOUT ELECTRONICS



VOLTAGE

24 VDC

MAXIMUM PRESSURE

350

MAXIMUM FLOW RATE

30.0

Code	Referencia	Descripción
HE08423024	PRM2-062-Z51/30-24E1	EV. PROP. ARGO-HYTOS NG6 4/2 24V
HE08432024	PRM2-063-Z11/30-24E1-K1	EV. PROP. ARGO-HYTOS NG6 4/3 24V
HE08433024	PRM2-063-Y11/30-24E1	EV. PROP. ARGO-HYTOS NG6 4/3 24V

The data provided is for guidance only and may be subject to changes or corrections without prior notice. Please contact us if you detect any errors or require further technical information. (Ficha generada el 18/06/2026 a las 02:49:47)